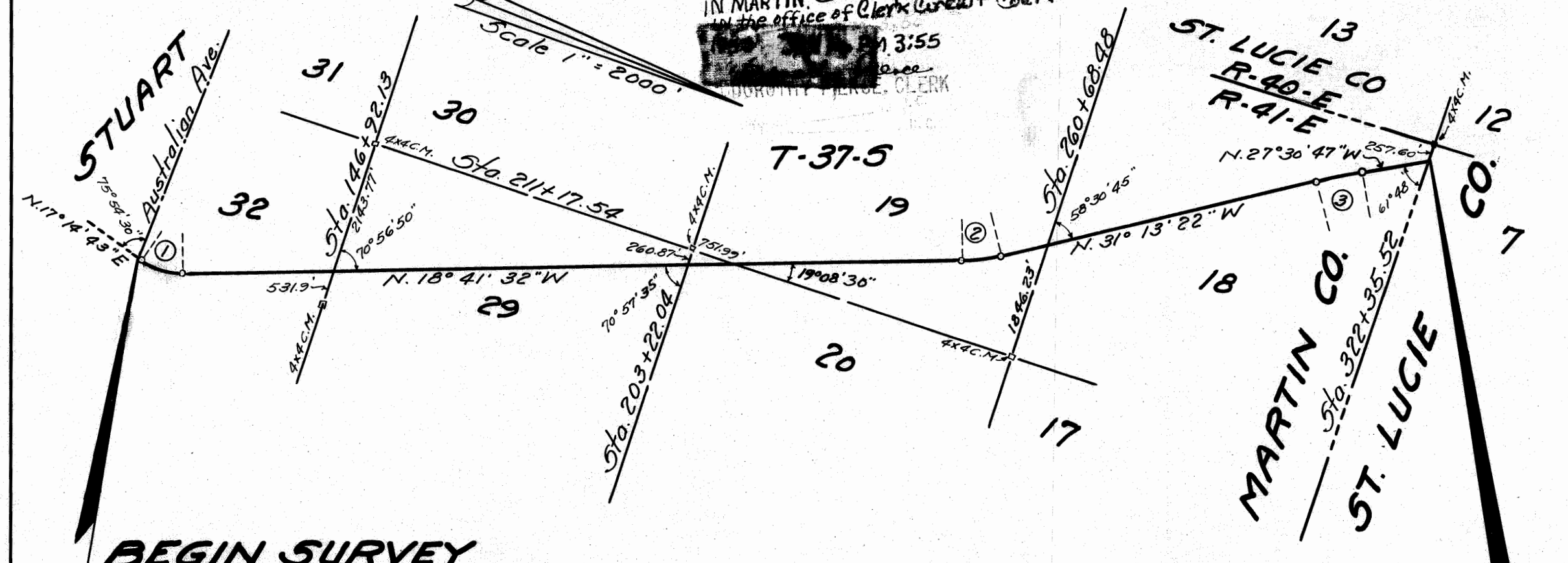


FILED & RECORDED
IN MARTIN COUNTY, FLA.
IN THE OFFICE OF CLERK CIRCUIT COURT
13:55
DOROTHY PIERCE, CLERK

Scale 1" = 2000'



BEGIN SURVEY
STA. 115+43.67

END SURVEY
STA. 322+35.52

①	②	③
P.I. Sta. 119+39.79	P.I. Sta. 249+45.34	P.I. Sta. 308+04.67
Δ 35° 56' 15" Lt.	Δ 12° 31' 50" Lt.	Δ = 3° 22' 35" Rt.
D 5° 00'	D 2° 00'	D = 0° 30'
T 371.76'	T 314.53'	T = 371.10'
L 718.75'	L 626.53'	L = 741.94'
P.C. Sta. 115+68.03	P.C. Sta. 246+30.81	P.C. Sta. 304+33.57
P.T. Sta. 122+86.78	P.T. Sta. 252+57.34	P.T. Sta. 311+75.51

Date: November 24, 1953

We, Richard H. Simpson, as Chairman of the State Road Department of the State of Florida, and E. W. Scarborough, as Secretary of the State Road Department of the State of Florida, do hereby certify that this map is the Official Map of Location and Survey of a portion of Section 8901, designated as a part of State Road 5 in St. Lucie County, Florida: Said portion of Section 8901 extending from Australian Avenue in Stuart, Northwesterly, to St. Lucie County Line. Prepared and adopted by the State Road Department of the State of Florida under provisions of Section 341.47, Florida Statutes of 1941.

Richard H. Simpson
Chairman State Road Department

E. W. Scarborough
Secretary State Road Department

D. Small
State Highway Engineer

Filed for record in the Office of the Clerk of Circuit Court for the County of Martin, State of Florida in Map Book 2 Page 104 on the 14th day of January A.D. 1954

Dorothy Pierce
Clerk of Circuit Court
Martin County, Florida

Sec. 8901, Rd 5, Martin County

